

Water tightness test of EFLEX square

**Furukawa Electric Co., LTD.
AT & Functional Plastics Div.
Functional Plastics Dept.**

• Test piece

- 1) Cut off the male and female side and joint it together (Fig.1).
- 2) Stop up the each end side to prevent the water coming inside (Fig.2).

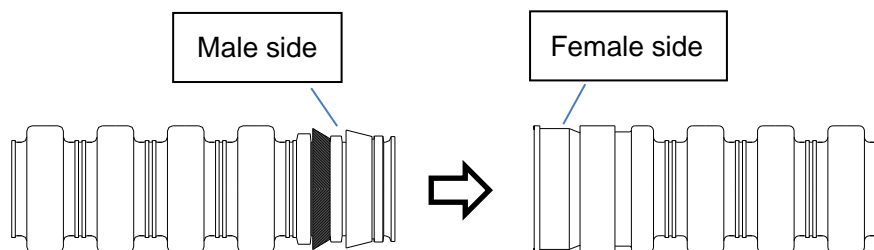


Fig.1

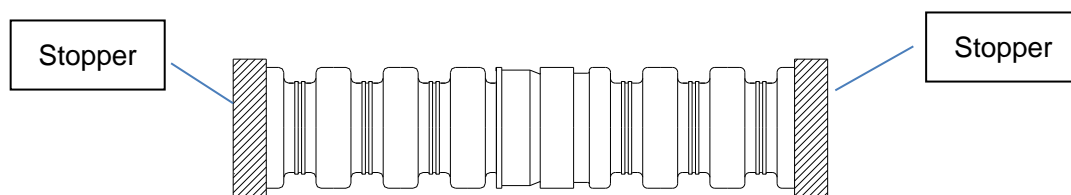


Fig.2

• Test method

Set the test piece inside of water tightness tester, fill up with the water, and keep 10min at 0.05MPa (Fig.3). After test, check the water ingress inside of test piece.

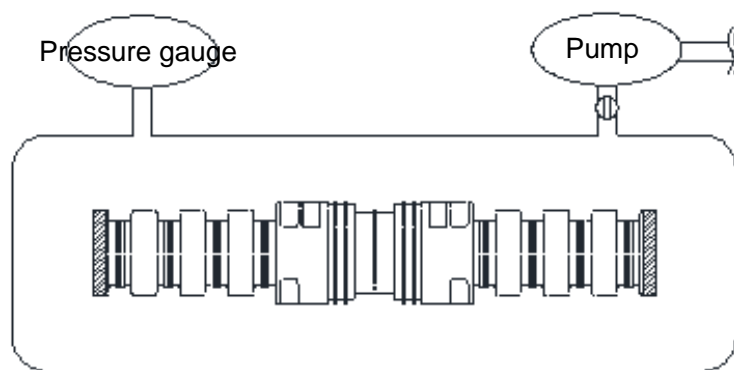


Fig.3

• Result

Table1. Test result

Test piece		Result
EFLEX square	50	No water ingress
EFLEX square	81	No water ingress
EFLEX square	100	No water ingress
EFLEX square	130	No water ingress
EFLEX square	150	No water ingress